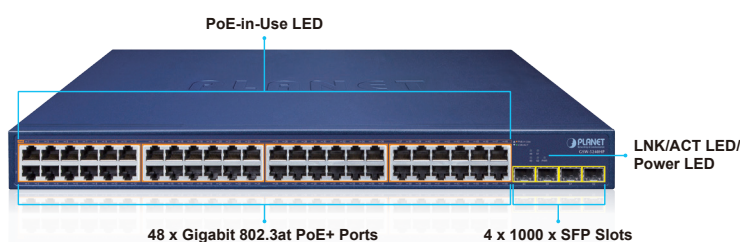


48-Port 10/100/1000T 802.3at PoE + 4-Port 1000X SFP Gigabit Ethernet Switch



Cost-optimized, Configure-free Gigabit PoE+ Switch for System Integrators

PLANET GSW-5240HP, an ideal high-density Gigabit PoE Switch, provides cost-effective and Plug and Play advantages for the local area networks of SMBs. Offering **Layer 2 data packet switching and stable operation**, this model also complies with **IEEE 802.3at Power over Ethernet Plus (PoE+)** at an affordable price. The GSW-5240HP is equipped with **48 10/100/1000BASE-T** Gigabit Ethernet ports and **4 1000BASE-X** SFP interfaces with inner power system. Its **48** Gigabit Ethernet ports are integrated with an 802.3at PoE+ injector function. It offers a rack-mountable, safe and reliable power solution for SMBs deploying Power over Ethernet networks. Though it includes robust features designed for **Enterprises** Ethernet networks, its Plug and Play makes configuration easy.



IEEE 802.3at PoE+ Compliant Power Source Switch

The PoE in-line power following the **IEEE 802.3at/af standard** makes the GSW-5240HP able to deliver Gigabit speed data and up to **30 watts** of power per port to 48 PoE compliant powered devices (PDs) with a combined power output budget of up to **370 watts**. The GSW-5240HP provides more flexibility in power requirement for all kinds of PDs with affordable installation costs.

Physical Port

- **48-port 10/100/1000BASE-T** Gigabit RJ45 copper with 802.3at PoE+ injector function
- **4 1000BASE-X** SFP slots

Power over Ethernet

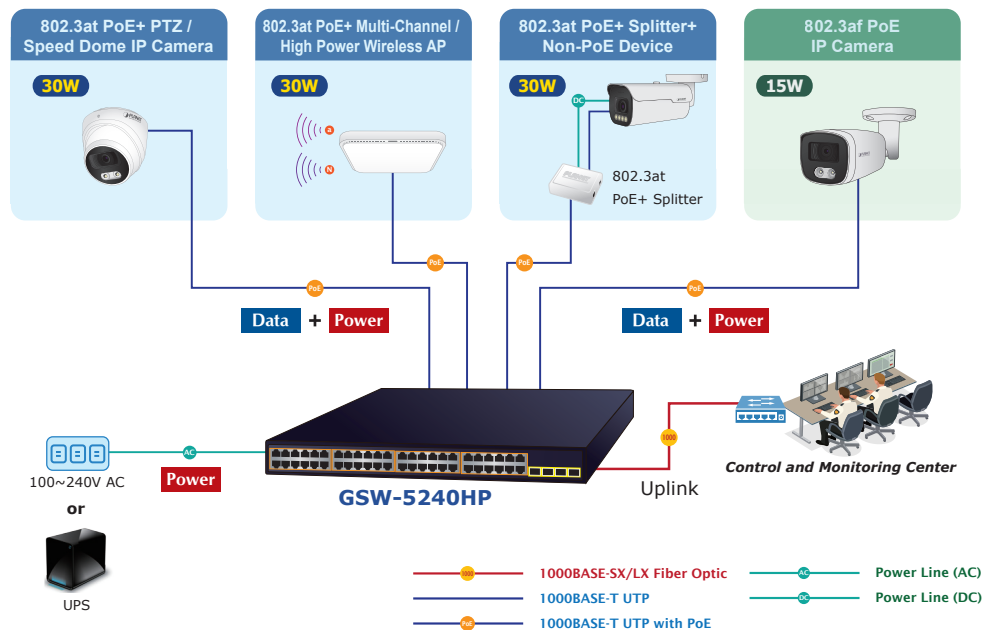
- Complies with IEEE 802.3af/at Power over Ethernet end-span PSE
- Up to 48 ports of IEEE 802.3af/at devices powered
- Supports PoE power up to 30 watts for each PoE port
- PD alive check function
- Each port supports 54V DC power to PoE powered device
- 370-watt PoE budget
- Auto detects powered device (PD)
- Circuit protection prevents power interference between ports
- Remote power feeding up to 100m

Switching

- Hardware-based 10/100/1000Mbps auto-negotiation and auto MDI/MDI-X
- Flow control for full duplex operation and back pressure for half duplex operation
- Integrates address look-up engine, supporting 16K auto-learning and auto-updating of MAC address table
- 12K jumbo frame
- Automatic address learning and address aging
- Supports Energy-Efficient Ethernet (EEE) function (IEEE 802.3az)

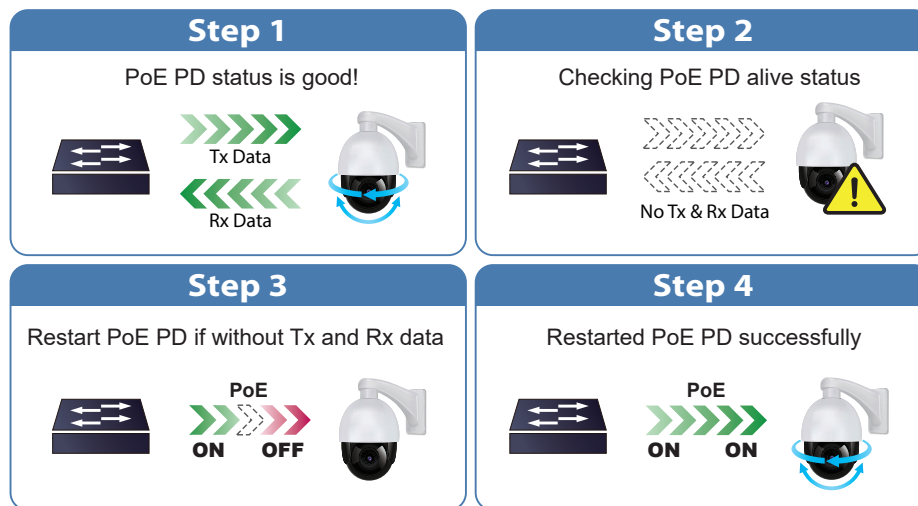
Hardware

- 19-inch desktop size, 1U height
- LED indicators for PoE ready and PoE activity
- Ethernet Link Energy-saving technology
 - Link down power savings
 - Intelligent use of power based on cable length



Intelligent Powered Device Alive Check

The GSW-5240HP can monitor connected PD status in real time via PD alive check function. Once the PD stops working and responding, the GSW-5240HP will resume the PoE power and bring the PD back to work. It will greatly enhance the network reliability through the PoE port resetting the PD's power source and reducing administrator management burden.



Energy-saving Design

The GSW-5240HP uses a new engine that incorporates two advanced Green Networking technologies:

- Idle Mode Link Down Power Savings
- Intelligent Use of Power based on Cable Length

The GSW-5240HP Gigabit Ethernet Switch is designed to provide high-performance and energy-saving solutions, especially suitable for environments that require stable network connections. It supports Energy Efficient Ethernet (EEE) function (IEEE 802.3az), automatically adjusting power consumption based on network traffic. With a maximum total power distribution of 370W for 802.3at PoE, it efficiently powers PoE-enabled devices, such as IP cameras, wireless access points and VoIP phones, ensuring stable operation.

In addition, the GSW-5240HP also features the advanced Ethernet Link Energy-saving technology. With the energy-saving feature, it can automatically reduce power consumption and further improve energy efficiency when the connected device is idle or turned off. The design that intelligently adjusts the power consumption according to the cable length can minimize unnecessary energy consumption and achieve efficient and economical operation. This switch is ideal for business and home networks, balancing performance, environmental protection and cost-effectiveness.

Easy Installation and Cable Connection

Providing data transfer and high PoE in one unit, the GSW-5240HP is able to reduce the need of extended cables and electrical outlets on the wall, ceiling or any unreachable place. It helps to lower the installation costs and simplify the installation effort. All the RJ45 copper interfaces of the GSW-5240HP support 10/100/1000Mbps auto-negotiation for optimal speed detection through RJ45 Category 6, 5 or 5e cables. It also supports standard auto-MDI/MDI-X that can detect the type of connection to any Ethernet device without requiring special straight-through or crossover cables.

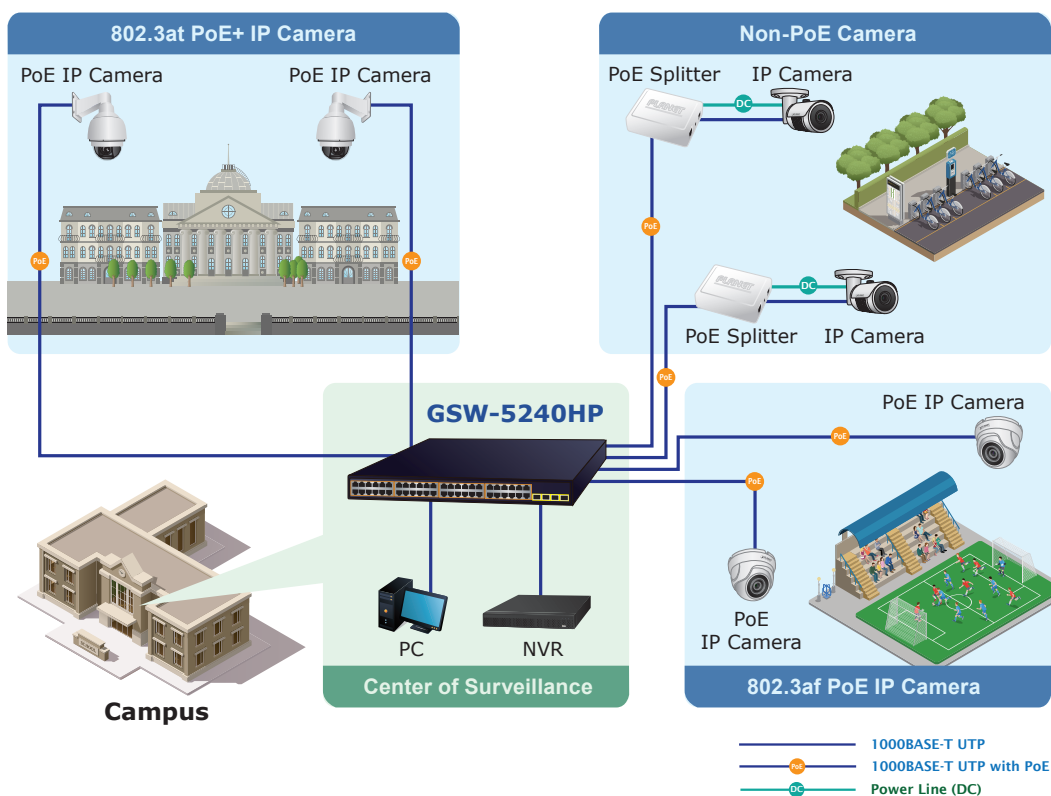
Flexible Extension Solution

The four mini-GBIC slots built in the GSW-5240HP are compatible with the **1000BASE-SX/LX** SFP (Small Form-factor Pluggable) fiber transceiver, uplinked to backbone switch and monitoring center in long distance. The distance can be extended from 550 meters to 2 kilometers (multi-mode fiber) and up to 10/20/40/80/120 kilometers (single-mode fiber or WDM fiber). They are well suited for applications within the enterprise data centers and distributions.

Applications

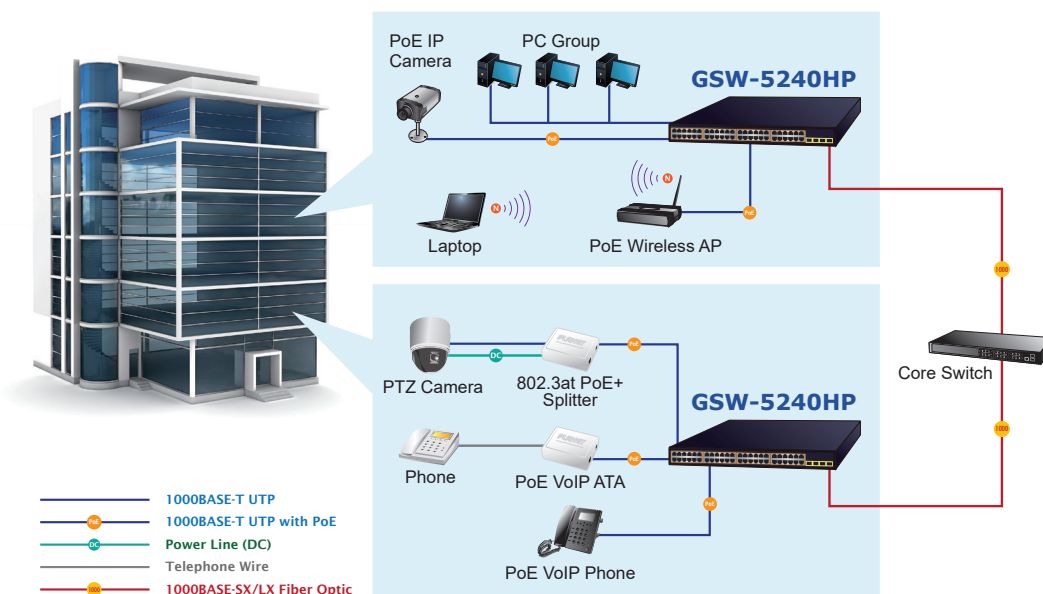
Perfect Integration Solution for PoE IP Surveillance

The GSW-5240HP provides an ideal, secure surveillance system at a lower total cost. It features 48 10/100/1000Mbps 802.3at PoE ports able to supply sufficient PoE power to 48 IEEE 802.3at PoE IP cameras at the same time. It is also able to connect with two 25-channel NVR systems or one 64-channel NVR system, uplinked to the backbone switch and the monitoring center. With such a high-performance switch architecture, the recorded video files from the PoE IP cameras can be saved in the NVR system to enable the administrators to control and monitor the surveillance images both in the local LAN and the remote sites.



Department/Workgroup PoE Network

Providing 48 PoE in-line power interfaces, the GSW-5240HP can easily build a power where IP phone system, IP camera system and wireless AP group for enterprises can be centrally controlled. The GSW-5240HP delivers full ports of 802.3af/at compliant Gigabit Ethernet network connectivity with high-performance and cost-effective advantages for the increasing number of PoE IP telephones, PoE IP cameras, PoE wireless access points and other devices applied at the edge of the small or medium enterprise network.



Product Specifications

Model	GSW-5240HP
Hardware Specifications	
10/100/1000BASE-T Copper Ports	48 auto-MDI/MDI-X ports
802.3af/at PoE+ Injector Port	48
1000BASE-X SFP/mini-GBIC Slots	4
Dimensions (W x D x H)	440 x 330 x 44.5 mm (1U height)
Enclosure	Metal
Weight	4899g
Power Requirements	100~240V AC, 50/60Hz, 5.5A max.
Power Consumption/Dissipation	Max. 420 watts/1432 BTU
Thermal Fan	4
ESD Protection	Contact ±6KV, Air ±8KV
Surge Protection	Differential mode ±2KV, Common mode ±4KV
LED Indicators	System: Power (Green) 10/100/1000T RJ45 Interfaces (Ports 1 to 48) 10/100/1000 LNK / ACT (Green), PoE-in-Use (Amber) 1000X SFP Interfaces (Ports 49 to 52) 1000 LNK / ACT (Green)
Switching	
Switch Architecture	Store-and-Forward
Switch Fabric	104Gbps/non-blocking
Switch Throughput@64bytes	77.3Mpps
MAC Address Table	16K, auto-learning and auto-updating
Jumbo Frame	12K Byte
Flow Control	IEEE 802.3x pause frame for full duplex; back pressure for half duplex
Power over Ethernet	
PoE Standard	IEEE 802.3at Power over Ethernet Plus/PSE Backward compatible with IEEE 802.3af Power over Ethernet
PoE Power Supply Type	End-span: 1/2 (+), 3/6 (-)
PoE Power Output	Per port 54V DC, 300mA. max. 15.4 watts (IEEE 802.3af) Per port 54V DC, 600mA. max. 30 watts (IEEE 802.3at)
PD Alive Check	Yes
PoE Power Budget	370 watts

Number of PDs, 7 watts	48
Number of PDs, 15.4 watts	24
Number of PDs, 30 watts	12
Standards Conformance	
Regulatory Compliance	FCC Part 15 Class A, CE
Standards Compliance	IEEE 802.3 10BASE-T IEEE 802.3u 100BASE-TX IEEE 802.3ab Gigabit 1000BASE-T IEEE 802.3z Gigabit SX/LX IEEE 802.3x flow control and back pressure IEEE 802.3af Power over Ethernet IEEE 802.3at Power over Ethernet Plus IEEE 802.3az Energy-Efficient Ethernet
Environment	
Operating	Temperature: 0 ~ 50 degrees C Relative Humidity: 5 ~ 95% (non-condensing)
Storage	Temperature: -10 ~ 70 degrees C Relative Humidity: 5 ~ 95% (non-condensing)

Ordering Information

GSW-5240HP	48-Port 10/100/1000T 802.3at PoE + 4-Port 1000X SFP Gigabit Ethernet Switch
------------	---

Available 1000Mbps Modules

Gigabit Ethernet Transceiver (1000BASE-X SFP)

Model	DDM	Speed (Mbps)	Connector Interface	Fiber Mode	Distance	Wavelength (nm)	Operating Temp.
MGB-GT	--	1000	Copper	--	100m	--	0 ~ 60 degrees C
MGB-SX(V2)	YES	1000	LC	Multi Mode	550m	850nm	0 ~ 60 degrees C
MGB-SX2(V2)	YES	1000	LC	Multi Mode	2km	1310nm	0 ~ 60 degrees C
MGB-LX(V2)	YES	1000	LC	Single Mode	20km	1310nm	0 ~ 60 degrees C
MGB-L40	YES	1000	LC	Single Mode	40km	1310nm	0 ~ 60 degrees C
MGB-L80	YES	1000	LC	Single Mode	80km	1550nm	0 ~ 60 degrees C
MGB-L120(V2)	YES	1000	LC	Single Mode	120km	1550nm	0 ~ 60 degrees C

Gigabit Ethernet Transceiver (1000BASE-BX, Single Fiber Bi-directional SFP)

Model	DDM	Speed (Mbps)	Connector Interface	Fiber Mode	Distance	Wavelength (TX)	Wavelength (RX)	Operating Temp.
MGB-LA10(V2)	YES	1000	WDM(LC)	Single Mode	10km	1310nm	1550nm	0 ~ 60 degrees C
MGB-LB10(V2)		1000	WDM(LC)	Single Mode	10km	1550nm	1310nm	0 ~ 60 degrees C
MGB-LA20(V2)	YES	1000	WDM(LC)	Single Mode	20km	1310nm	1550nm	0 ~ 60 degrees C
MGB-LB20(V2)		1000	WDM(LC)	Single Mode	20km	1550nm	1310nm	0 ~ 60 degrees C
MGB-LA40(V2)	YES	1000	WDM(LC)	Single Mode	40km	1310nm	1550nm	0 ~ 60 degrees C
MGB-LB40(V2)		1000	WDM(LC)	Single Mode	40km	1550nm	1310nm	0 ~ 60 degrees C
MGB-LA80	YES	1000	WDM(LC)	Single Mode	80km	1490nm	1550nm	0 ~ 60 degrees C
MGB-LB80		1000	WDM(LC)	Single Mode	80km	1550nm	1490nm	0 ~ 60 degrees C

Related PoE+ Indoor Wireless APs

WDAP-W3000AX	Dual Band 802.11ax 3000Mbps In-wall Wireless Access Point
WDAP-C3000AX	Dual Band 802.11ax 3000Mbps Ceiling-mount Wireless Access Point w/802.3at PoE+ and 2 10/100/1000T LAN Ports
WDAP-C7210E	1200Mbps 802.11ac Wave 2 Dual Band Ceiling-mount Wireless Access Point w/802.3at PoE+ and 2 10/100/1000T LAN Ports

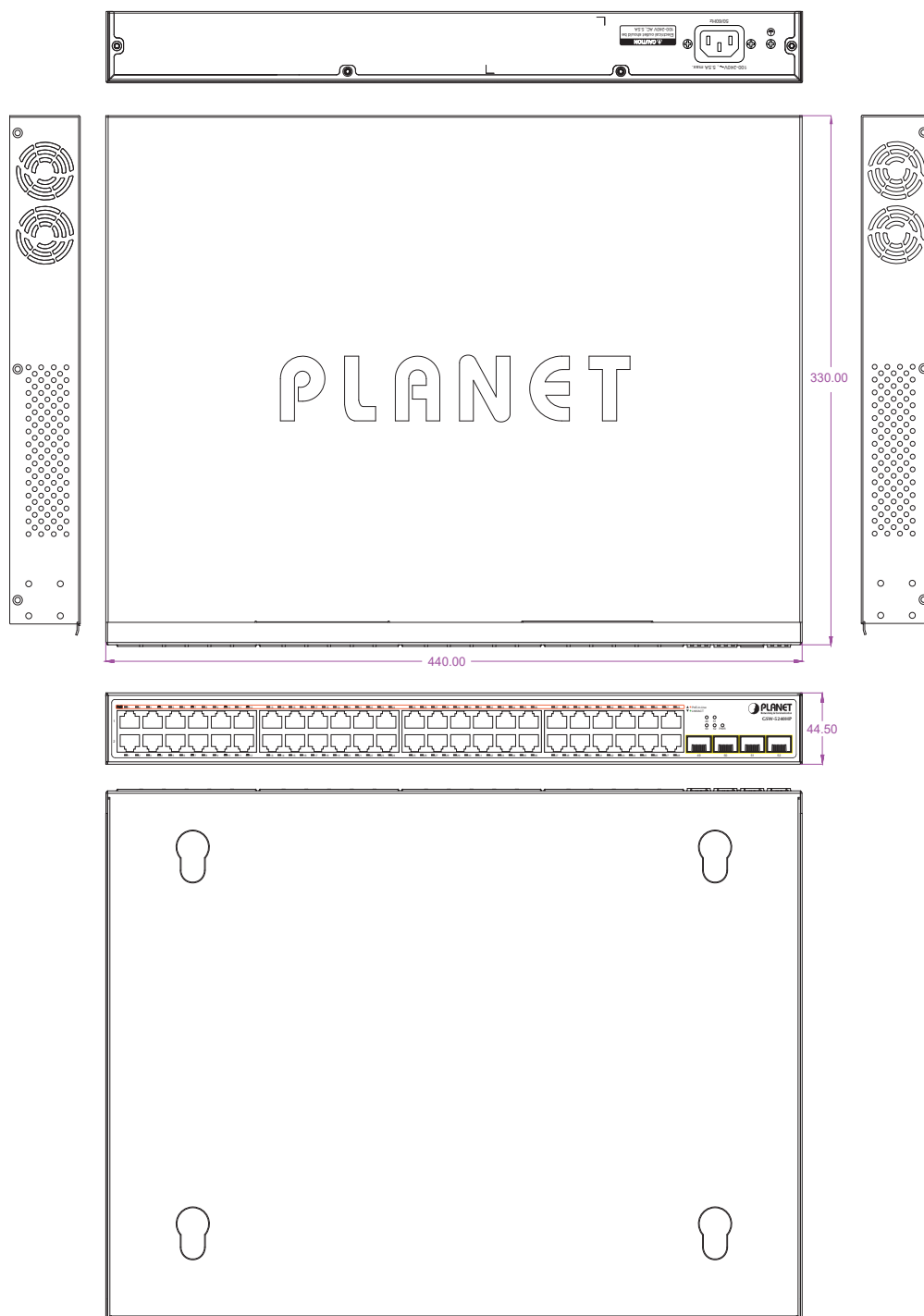
Related IP Surveillance PoE Products

ICA-3480	H.265+ 4MP Smart IR Bullet IP Camera
ICA-4480F	H.265+ 4MP Full Color Dome IP Camera
ICA-4480	H.265+ 4MP Full Color Dome IP Camera
ICA-M3580P	H.265 5 Mega-pixel Smart IR Bullet IP Camera with Remote Focus and Zoom
ICA-M4580P	H.265 5 Mega-pixel Smart IR Dome IP Camera with Remote Focus and Zoom
ICA-HM620	2 Mega-pixel PoE Plus Speed Dome Internet Camera

Related PoE+ Indoor VoIP Products

ICF-2000	7" Smart Media Android SIP Conference Phone with Full HD Camera and Touch Screen
VIP-1140PT	High Definition Color PoE IP Phone
VIP-1260PT	High Definition Color PoE Gigabit IP Phone

Dimensions



Dimensions (W x D x H): 440 x 330 x 44.5 mm

PLANET Technology Corporation

11F., No.96, Minquan Rd., Xindian Dist., New Taipei City 231,
Taiwan (R.O.C.)

Tel: 886-2-2219-9518

Email: sales@planet.com.tw

Fax: 886-2-2219-9528

www.planet.com.tw



PLANET reserves the right to change specifications without prior notice. All brand names and trademarks are property of their respective owners. Copyright © 2025 PLANET Technology Corp. All rights reserved.

GSW-5240HP